

To install „Consys Master“ get files from:
www.tycofire.hpage.com/

[Login](#)
[Restricted](#)
[Contact](#)
[Guestbook](#)
[Logout](#)

[Cerberus](#)
Fire Detection Equipment World Wide
Supplier
<>

[Fire Alarm Panel](#)
Search Thousands of Cat
Alarm Panel

Documentation: [english](#)

 [Login](#)
This page is accessible only for registered members.
User name:
Password:
[Log in](#)

>> Register now
[>> Forgot your password?](#)
[>> Change data](#)

 [Login](#)
Diese Seite ist nur für registrierte Mitglieder zugänglich.
Benutzername:
Passwort:
[Einloggen](#)

>> Jetzt registrieren
[>> Passwort vergessen?](#)
[>> Daten ändern](#)

>> Register now

Register (1/2)

Here you can register for free on <http://tycofire.hpage.com>.

| | |
|---|---|
| Username (*): | <input type="text" value="Mike Donald"/> |
| Password (*): | <input type="password" value="••••••••••"/> |
| Email address (*): | <input type="text" value="mdonald@abcd.com"/> |
| First name: | <input type="text" value="Mike"/> |
| Last name: | <input type="text" value="Donald"/> |
| Website: | <input type="text" value="http://"/> |
| Country: | <input type="text" value="Mexico"/> |
| <input type="button" value="Register"/> | |

(*) Required fields must be completed.

« **Back**

Register (2/2)

Congratulations! You have registered successfully, but you cannot log in until you have activated your account by email.

Hello Mike Donald,

you are receiving this email, because you have registered on <http://tycofire.hpage.com> for free.

Please confirm your registration by clicking on the following link:

http://tycofire.hpage.com/act_101_b881c026164cee73f019c478ec29b998.html

Your username: Mike Donald

Your password: abcdxxxx1234

Enjoy the website!

Sincerely yours,

Tyco Fire

Activation

Your account has already been activated by email.



[Login](#)
This page

Login

Username:

Password:

- » [Register now!](#)
- » [Forgot your password?](#)
- » [Change data](#)

[Login](#)
[Consys Master](#)
[Restricted](#)
[Contact](#)
[Guestbook](#)
[Logout](#)

[Your Zodiac Horoscope](#)
Insert Your Birthdate & Get
about Past-Present and Future

Login

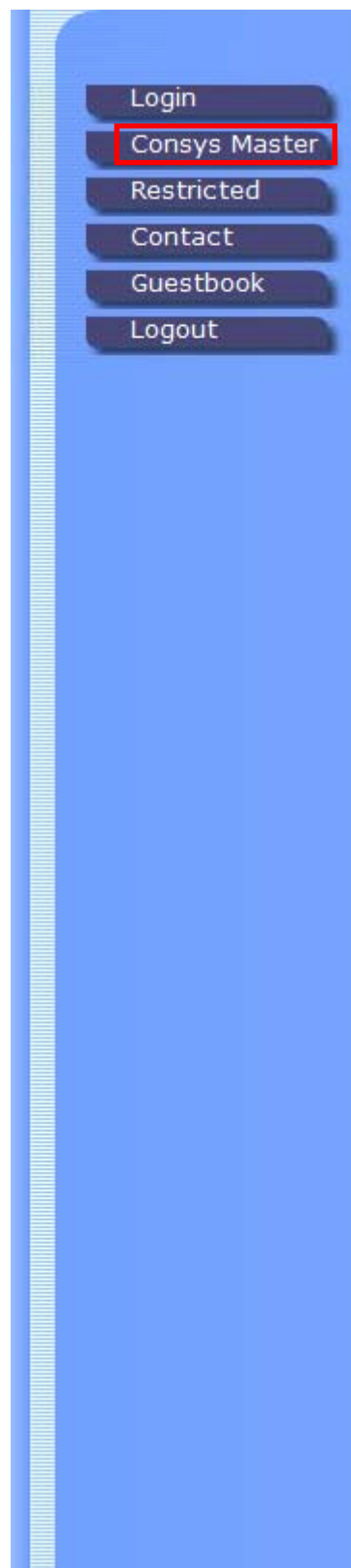
You have logged in successfully.

- » [Log out now](#)
- » [Change data](#)

[Restricted](#)
[Contact](#)
[Logout](#)

This text page is protected with a password. Please enter the correct password:

Software: [Consys Master](#)



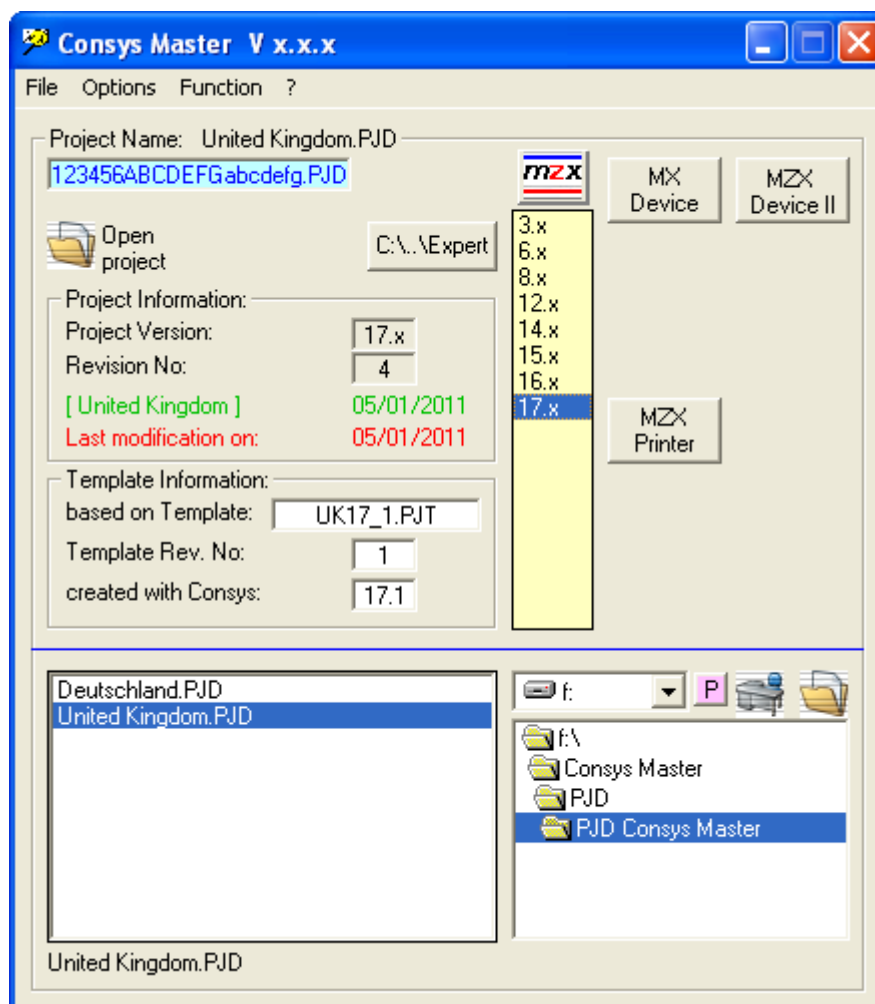
Fire Alarm Systems

Call Us Today, We Have A Wide Range Of Fire And Smoke Alarms In Stock.



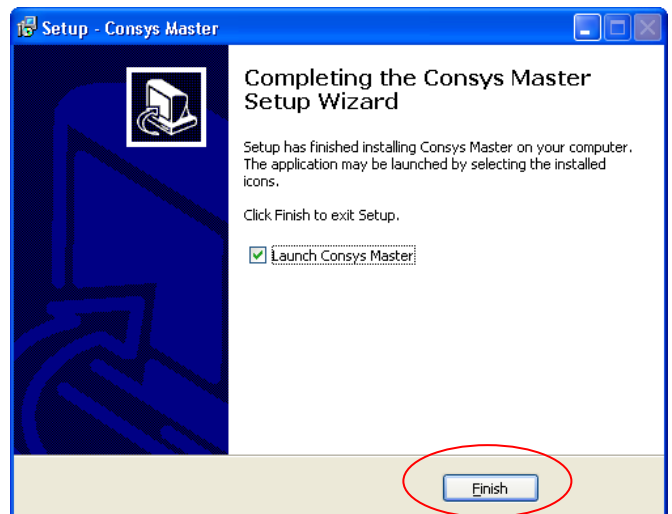
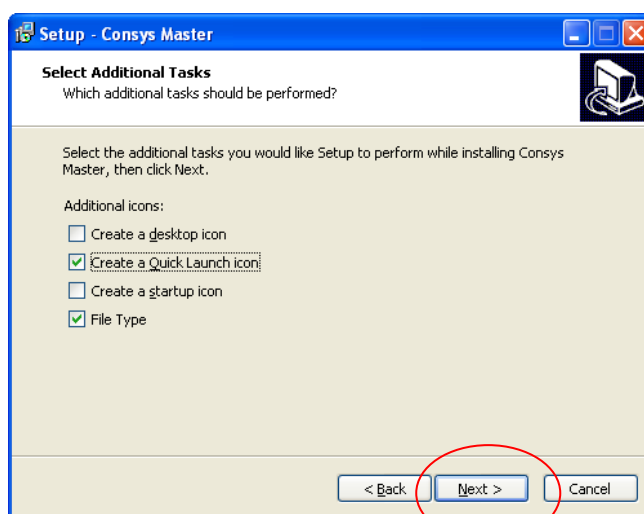
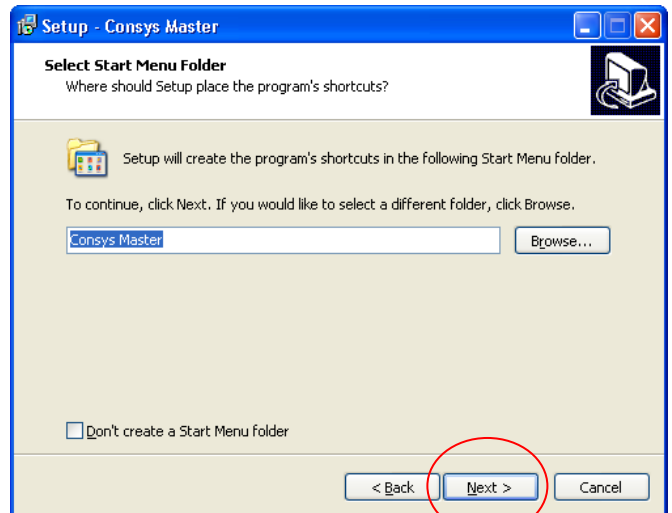
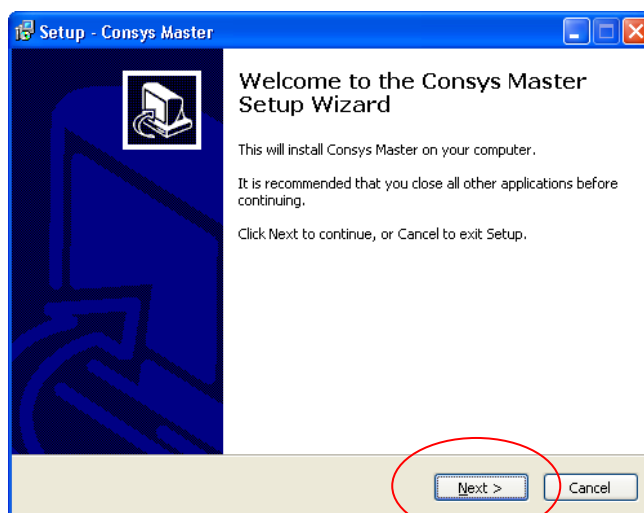
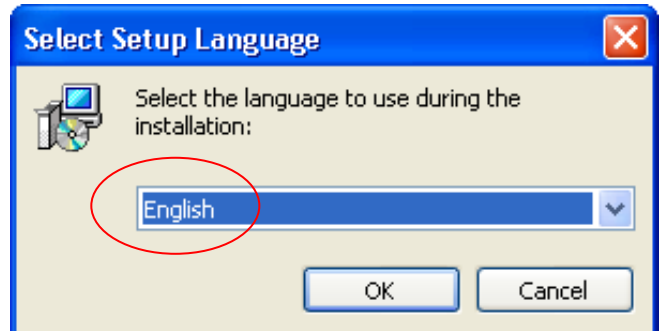
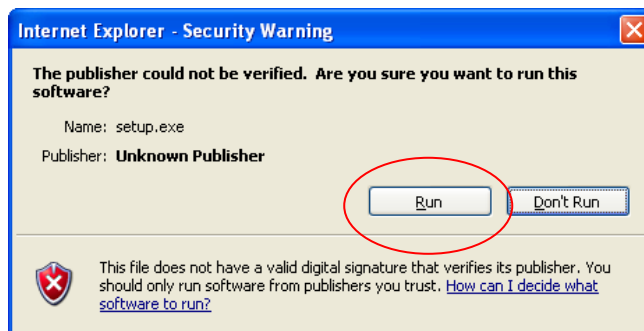
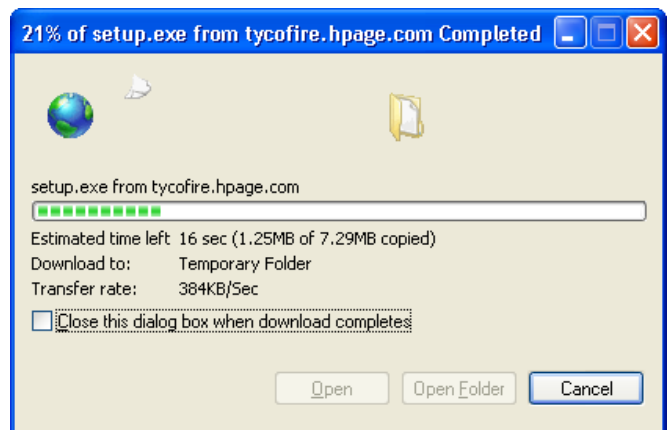
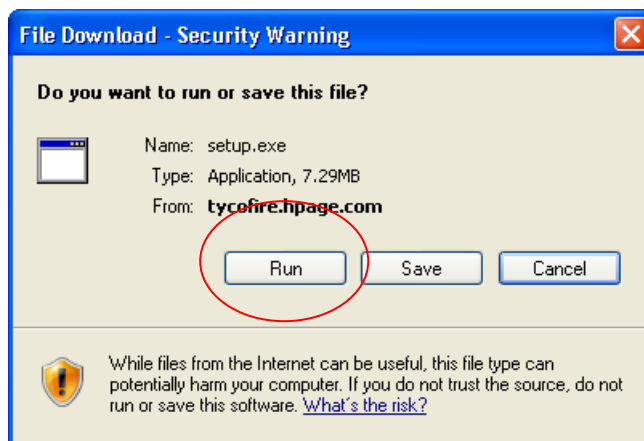
Google-Anzeigen

| | | |
|---------------|-------|------------|
| Consys Master | 4.0.0 | 2011/01/10 |
| MX Device | 3.1.0 | 2010/12/31 |
| MZX Device II | 1.1.0 | 2010/12/31 |
| MZX Printer | 3.1.0 | 2010/12/31 |



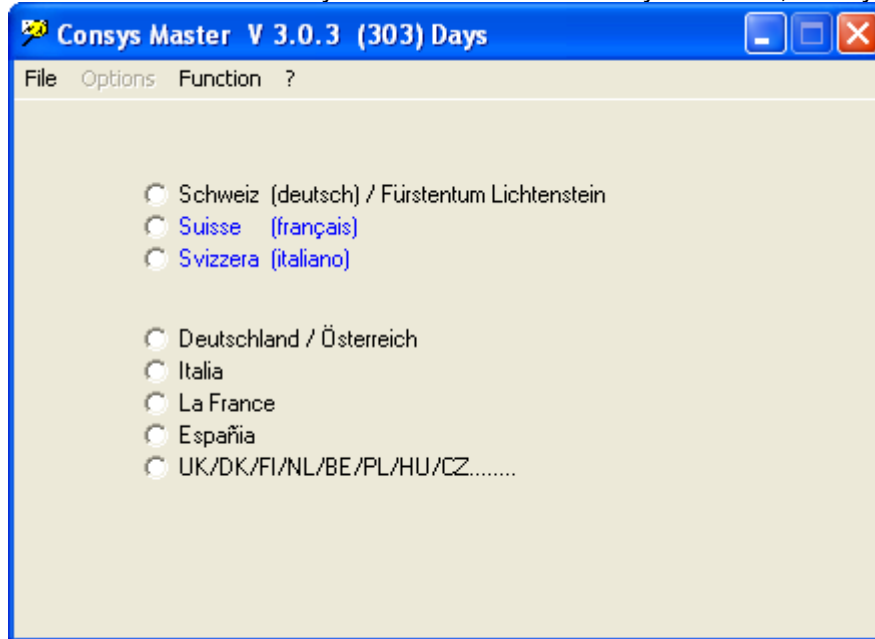
Software: [Consys Master](#)

1. select this link



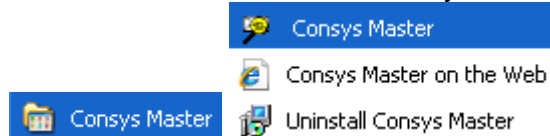
All files are installed in directory „...\Fire\Expert\ZetTool\ConsysMaster\“.

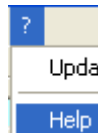
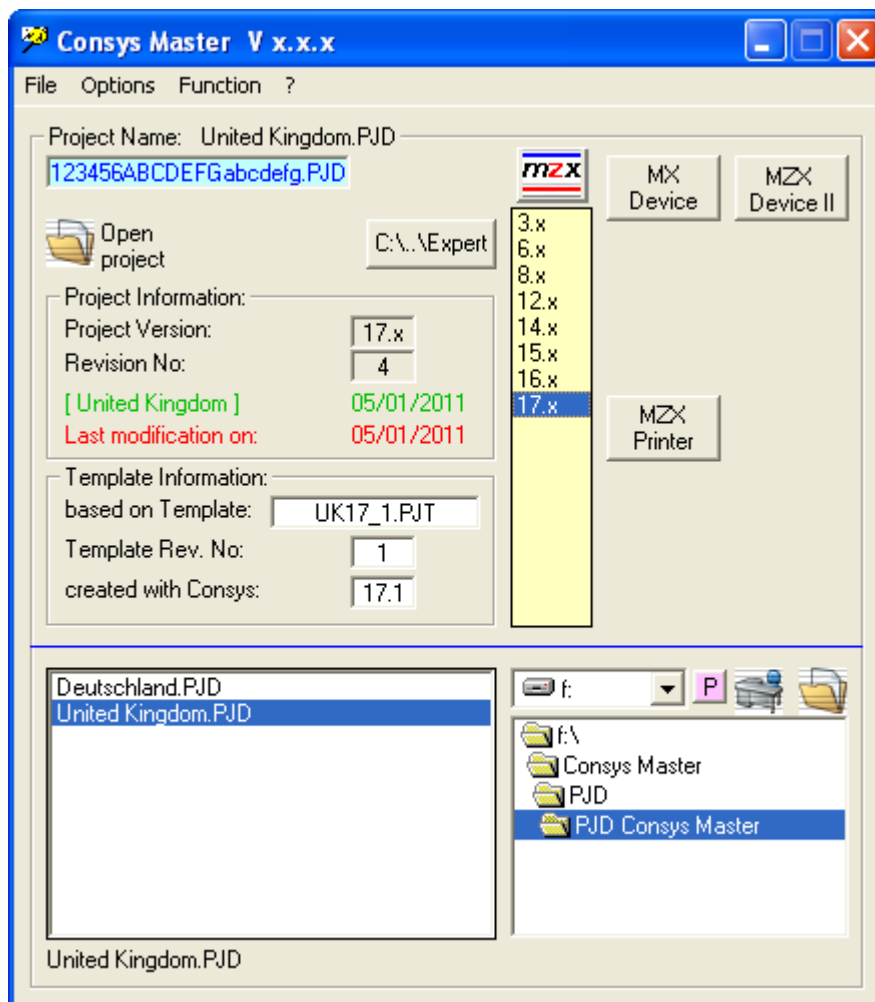
- If this is the first time you have installed “Consys Master”, then you will get following window.



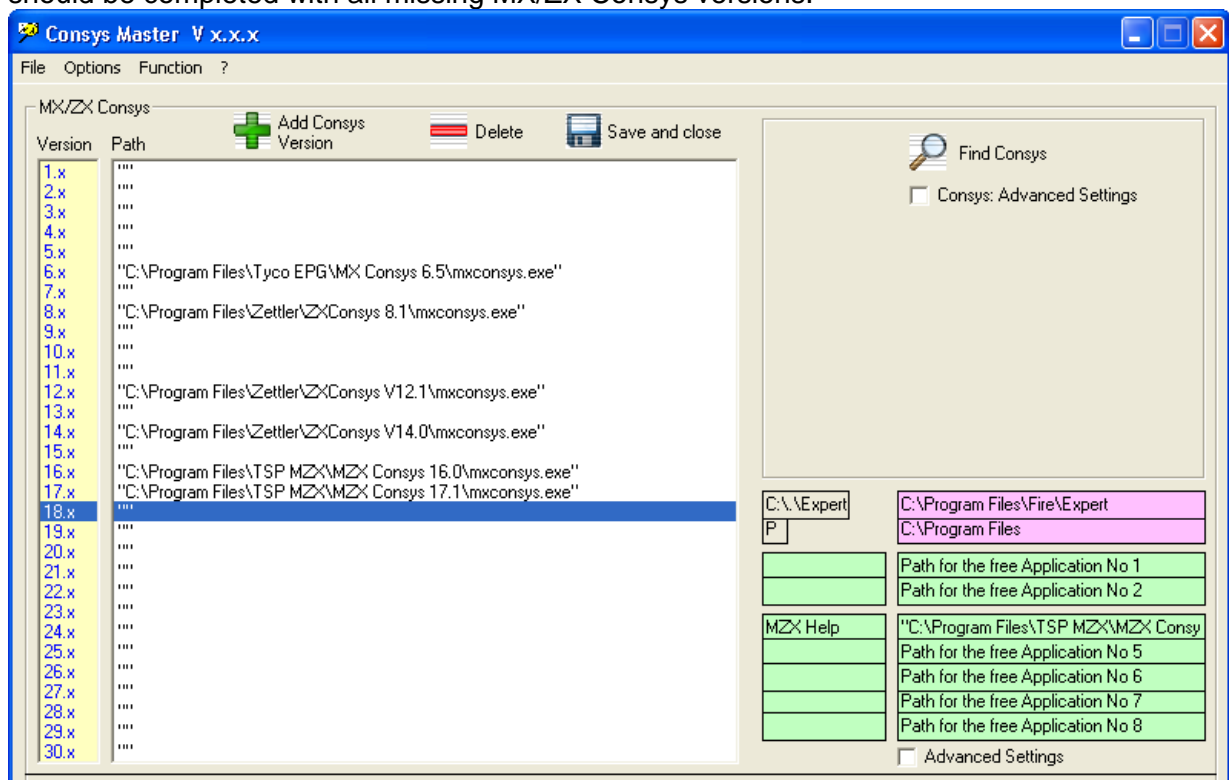
- Here you can choose the behaviour of “Consys Master” after restarting the program.
- Also you can setup the basic options for different countries.


- In the start menu  you will get a new entry






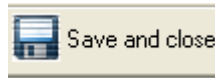
This documentation will be opened. Consys Master now has all basic functionalities and should be completed with all missing MX/ZX Consys versions.



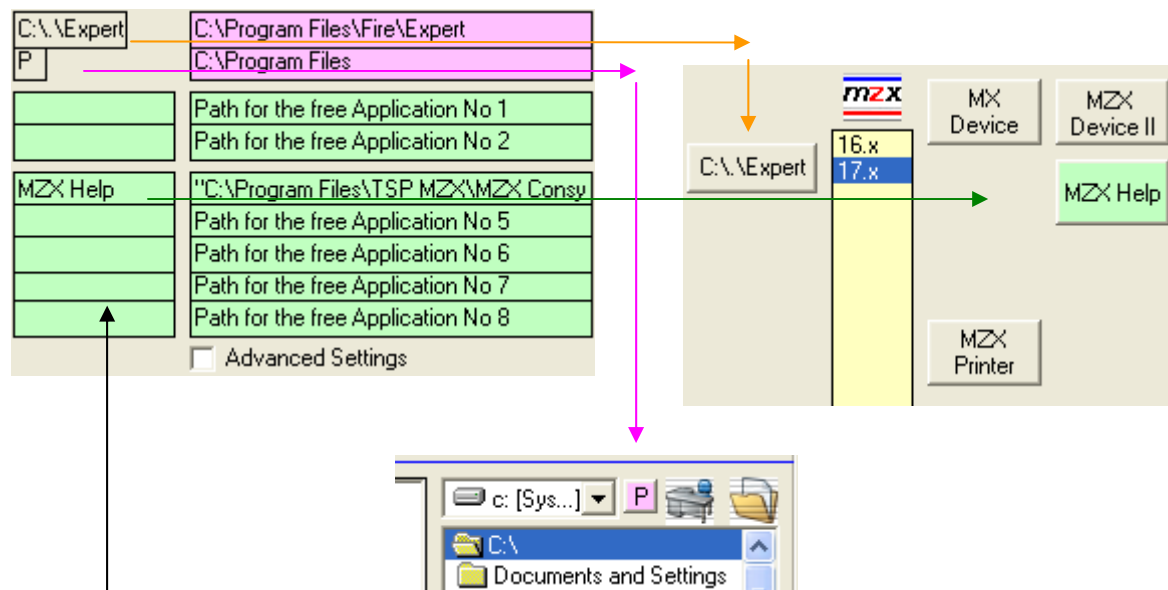
Open  by clicking.

With  you added a Consys version by hand.

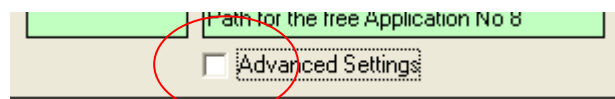
If you want to delete a link, then highlight the line and press .

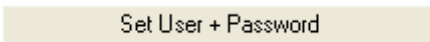
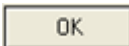
The Button , saves the Settings and close this window.

- 2 freely programmable Directories. e.g. "Program Files"



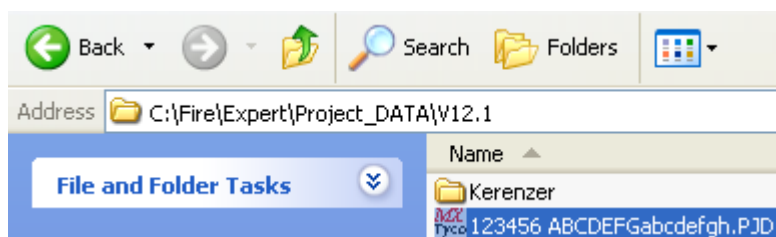
- 7 freely programmable applications. e.g. „opens the MZX Help File“

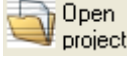
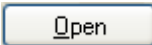


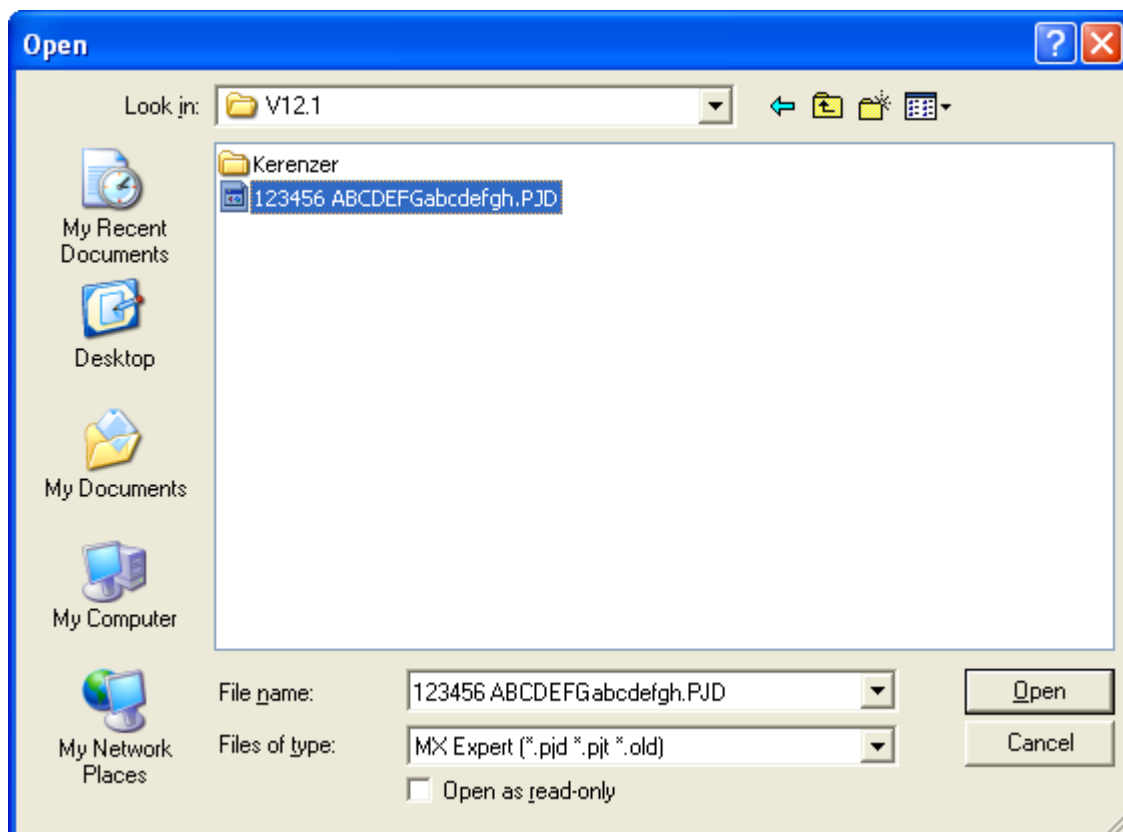
- With  you will open
- Here you can set User Name and Password. In addition you have to choose Germany, France Italy or Spain to confirm with  the Country Language.

- If you press **! Standard !** , then all setups will be deleted and Consys Master will be closed! After next start of Consys Master all will be in default setup.
- If ☒ + Run Consys automatically is active, then MX/ZX Consys will start automatically (you do not have to type in User Name and Password). (User Name and Password has to be defined before).
- If ☒ + Run Consys after opening a project is active, then MX/ZX Consys will start automatically with the correct Consys version of the *.pjd file. (You have to setup mxconsys.exe before to each version)
- If ☐ + Run Consys after opening a project is not active, **Auto Consys** will start MX/ZX Consys with opened project.



Consys Master was with the extensions *. PJD (if enabled in the setup [File Type]), associated. I.e. that by double-clicking a project file directly from My Computer / Explorer, the appropriate version of Consys (of course only when actually present on the PC) starts automatically the selected project.




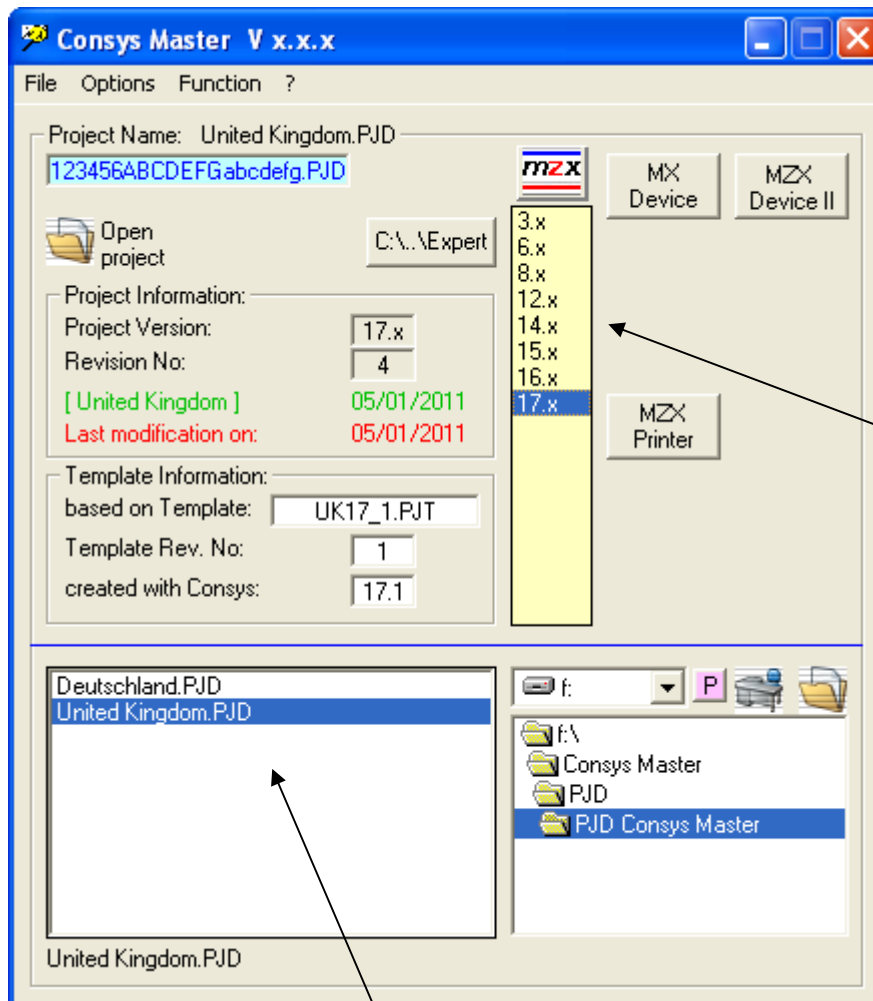
With  you can choose the project file and with  or double click it will be opened.




From this project file you get all relevant information.


One click on  opens the chosen  Consys Version.

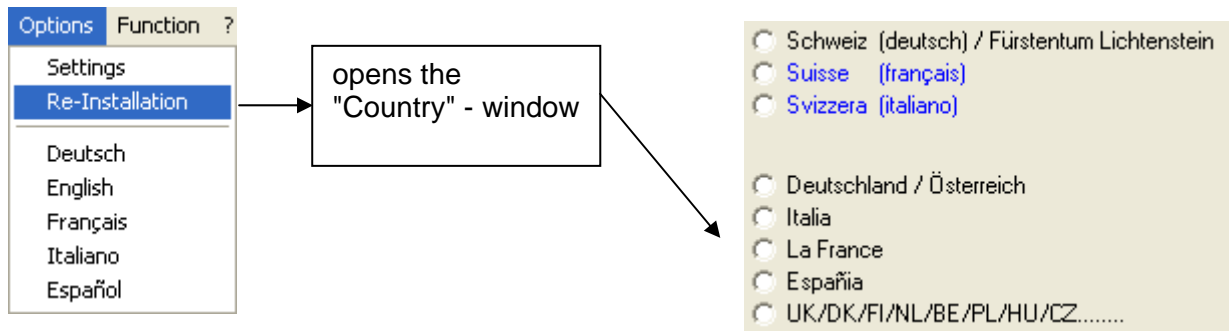
Double click on  opens the file.



One click selects the desired MZX Consys version and can be started with  manually.

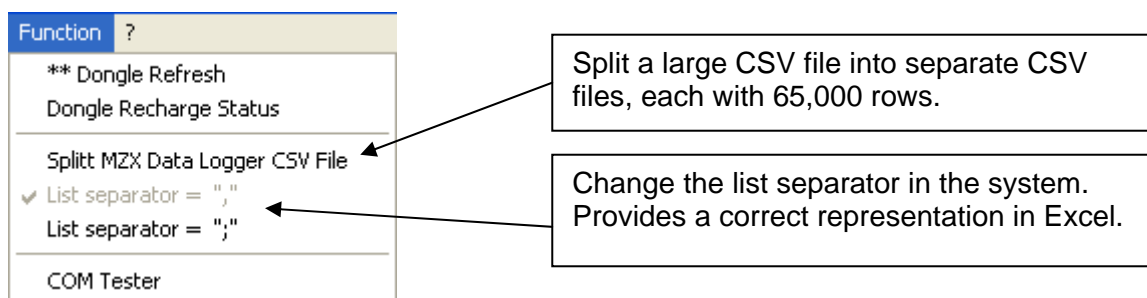
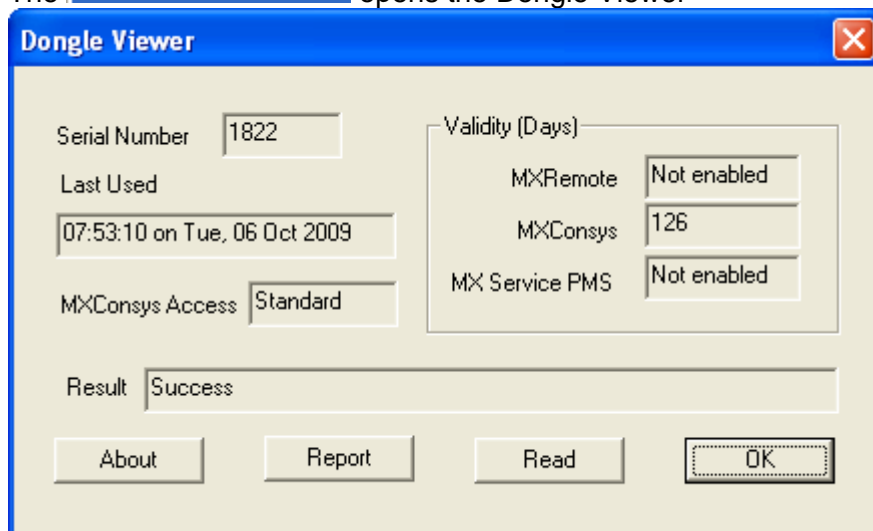
Double click starts the selected MZX Consys version

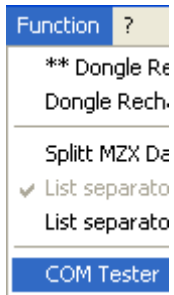
- Left mouse button reads information from the project file.
- Right mouse button will open the History log.
- "Shift" and left mouse button selects the desired project, that after pressing the  button, MZX Device II starts with this project.
- Double click opens the appropriate project with the associated Consys.



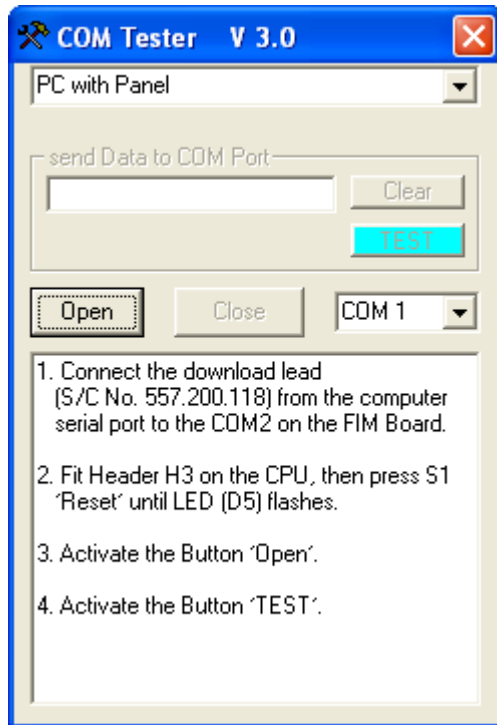
The valid days can be updated by **Function ?** **** Dongle Refresh** **Consys Master V 3.0.0 (126) Days**

The **Function ?** **** Dongle Refresh** **Dongle Recharge Status** opens the Dongle Viewer





With the serial port and the download lead can by tested.





Opens MX Device (MX DeviceA.exe)

Attention:

MX Device uses the same links to the different MX/ZX Consys Versions as Consys Master!



Creates an export file with same name (*.txt) e.g. for AV300.



Opens a project and reports all programmed loop devices per panel and totally.



Opens a project and creates a list (*.rtf) with all zone and point information, which you can open and edit with Microsoft Word.



Opens a project and creates a list (*.csv) with all zone and point information, which you can open and edit with Microsoft Excel.

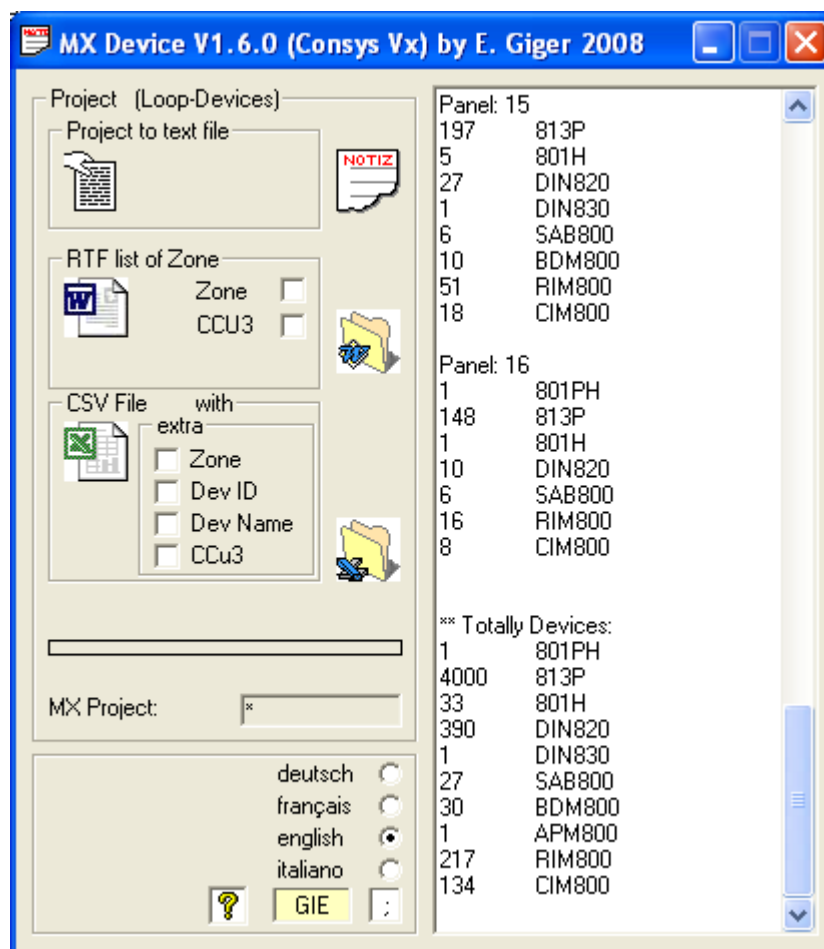


Opens the directory of the rtf files.



Opens the directory of the csv files.

[Alexa Netzwerk.PJD](#) , [Alexa Netzwerk \(10\).rtf](#) gives the name of the opened file.



= Abbreviation of name in *.rtf Word documents as headline



= Separator for D + CH (Excel) / Separator for UK...



opens the MX Expert Printer simulation program MZX Printer.exe



Starts recording



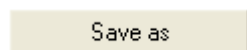
Stops recording



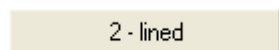
Pauses recording



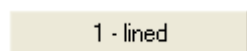
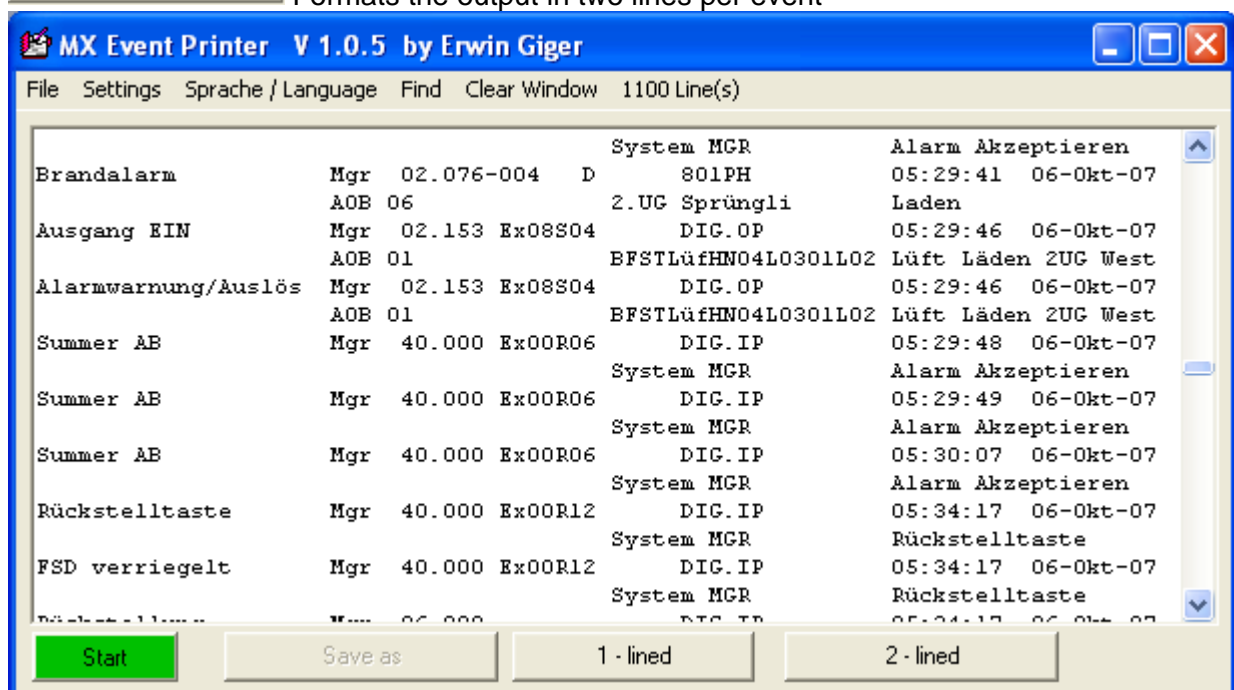
Continues with recording



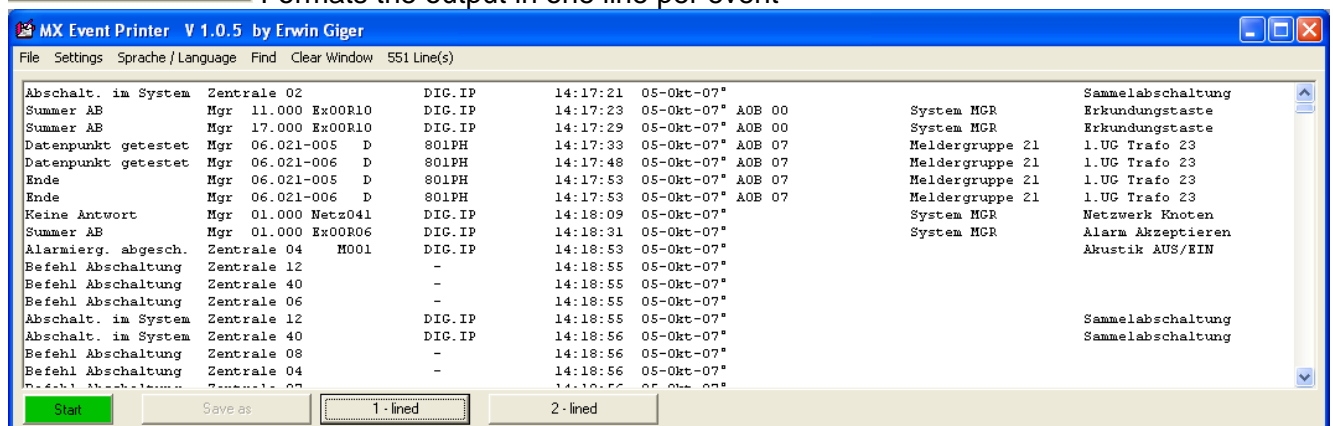
Saves the record as *.rtf file and can be opened and edit with Microsoft Word.

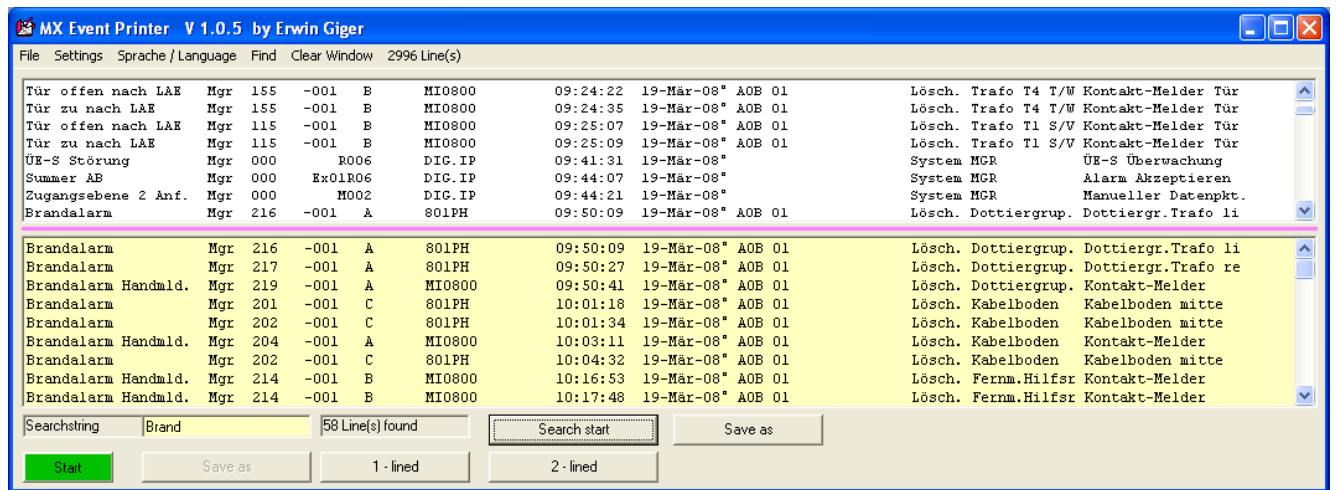


Formats the output in two lines per event



Formats the output in one line per event





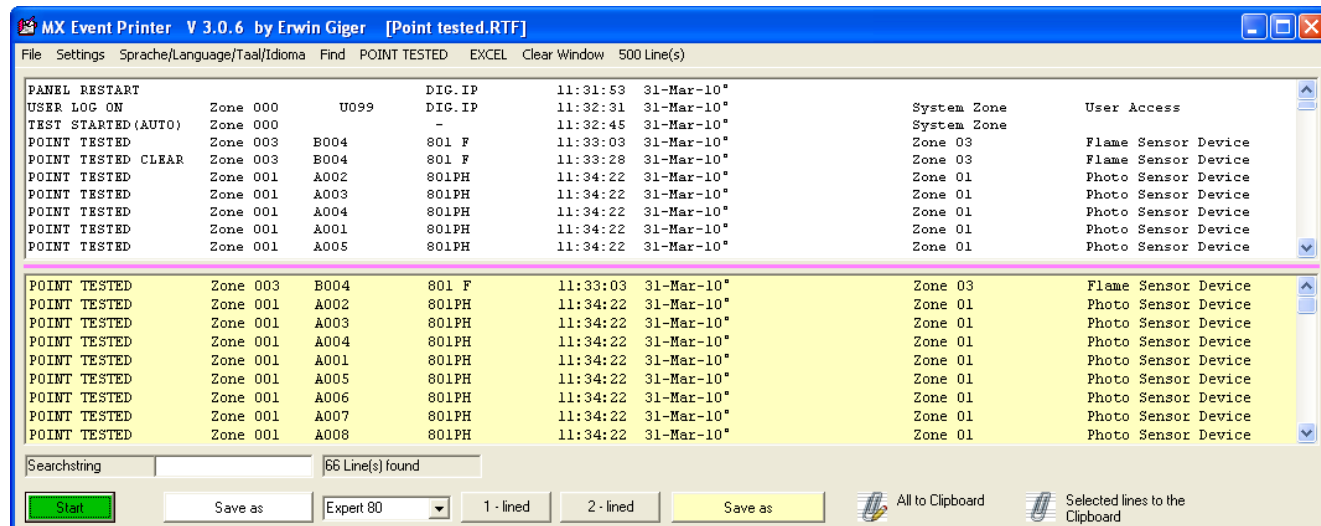
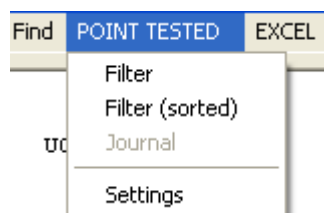
With **File** **File open...** you can reopen a saved file.

With the Magenta coloured dividing line **Brandalarm** the window size can be changed.

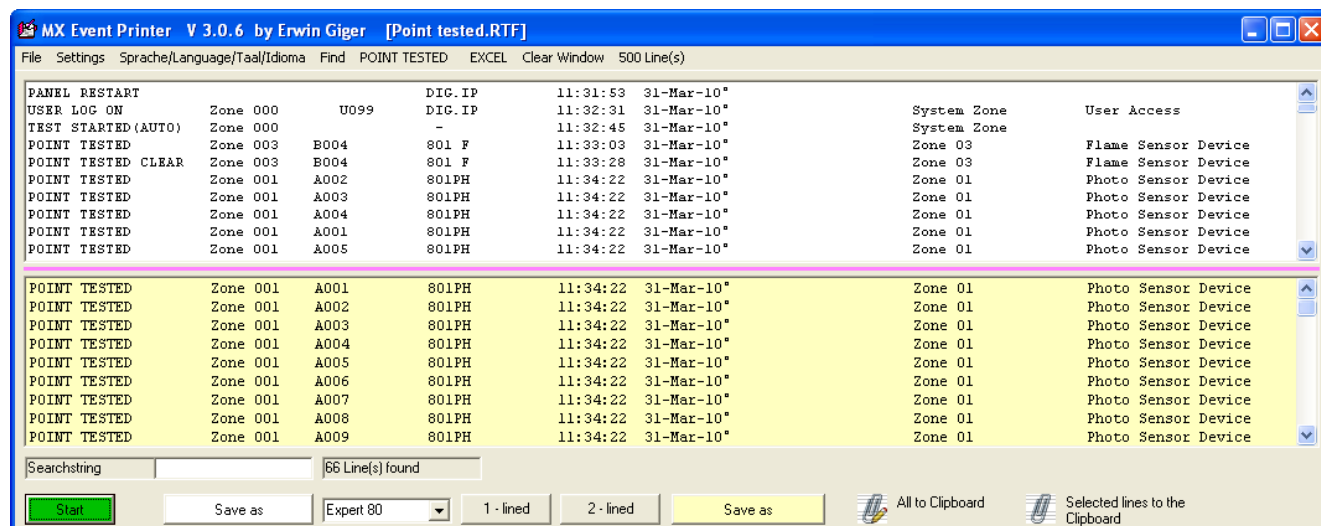
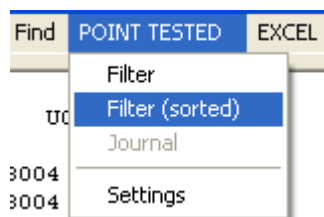
If **Start** is active at 23:59 h and figures are in the recording window, the contents of the window will be saved as a file in "C:\Fire\Expert\ZetTool\Record\" and under the name of the according date i.e. „27.08.2008.rtf“.



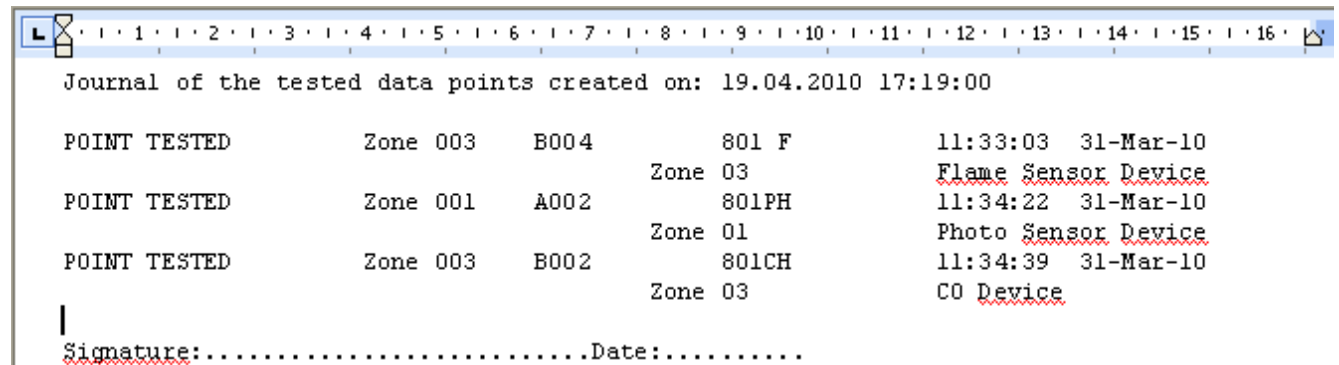
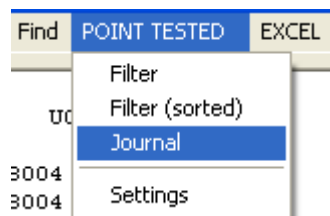
Output of the tested data points in the same order they were triggered.



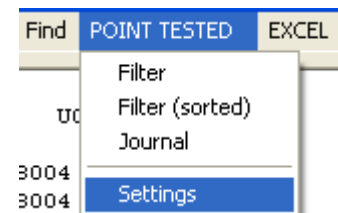
Output of the tested data points sorted in ascending order by zones and device number.



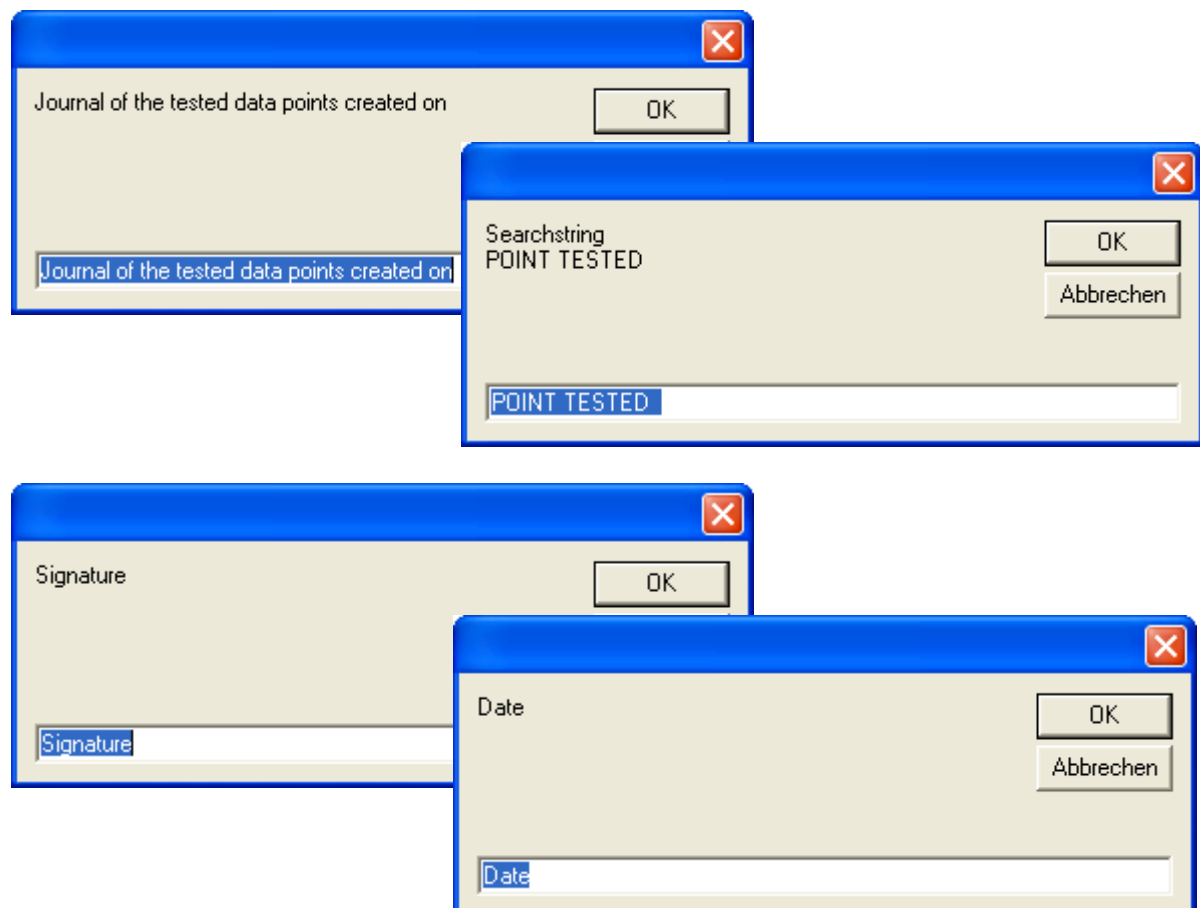
Create from the "filtered" data point, a log in RTF format.



Settings



Country-specific settings are done in conjunction with the "data point".



Copies the displayed data points to the clipboard, so they can be with "CTRL + V" is inserted in Excel.

| POINT TESTED | EXCEL | Clear Window |
|--------------|--------|--------------|
| DIG. IP | 11:31: | |
| 99 DIG. IP | 11:32: | |



| | A | B | C | D | E | F | G |
|---|--------------------|---------------|---------|--------------------|---|-------------|---------------------|
| 1 | PANEL RESTART | | DIG. IP | 11:31:53 31-Mar-10 | | | |
| 2 | USER LOG ON | Zone 000 U099 | DIG. IP | 11:32:31 31-Mar-10 | | System Zone | User Access |
| 3 | TEST STARTED(AUTO) | Zone 000 | - | 11:32:45 31-Mar-10 | | System Zone | |
| 4 | POINT TESTED | Zone 003 B004 | 801 F | 11:33:03 31-Mar-10 | | Zone 03 | Flame Sensor Device |
| 5 | POINT TESTED CLEAR | Zone 003 B004 | 801 F | 11:33:28 31-Mar-10 | | Zone 03 | Flame Sensor Device |
| 6 | POINT TESTED | Zone 001 A002 | 801 PH | 11:34:22 31-Mar-10 | | Zone 01 | Photo Sensor Device |
| 7 | POINT TESTED | Zone 001 A003 | 801 PH | 11:34:22 31-Mar-10 | | Zone 01 | Photo Sensor Device |
| 8 | POINT TESTED | Zone 001 A004 | 801 PH | 11:34:22 31-Mar-10 | | Zone 01 | Photo Sensor Device |
| 9 | POINT TESTED | Zone 001 A001 | 801 PH | 11:34:22 31-Mar-10 | | Zone 01 | Photo Sensor Device |

Files:

| File | Version | Description |
|---------------------|---------|---|
| Consys Master.exe | 4.0.0 | Main program |
| MX DEVICE d.pdf | 1.5.5 | German documentation of MX Device |
| MX DEVICE e.pdf | 1.5.5 | English documentation of MX Device |
| MX DeviceA.exe | 3.1.0 | MX Device main program |
| MZX Device II | 1.0.5 | MZX Device II main program |
| MZX Printer.exe | 3.1.0 | Simulation program for MZX Printer |
| MXDevice.cfg | 1.5.5 | Configuration file of MX Device |
| MXPjd.exe | 2.0.3 | Program to start MX/ZX Consys automatically |
| MXPW.exe | 3.1.0 | Program to start the assigned PJD / OLD and PJT files |
| Donglev.exe | 2.0.3 | Program to start the donglevw.exe |
| Consys Master D.pdf | 3.1.0 | German documentation of Consys Master |
| Consys Master E.pdf | 3.1.0 | English documentation of Consys Master |
| Consys Master F.pdf | 2.0.0 | French documentation of Consys Master |
| Consys Master I.pdf | 2.0.0 | Italian documentation of Consys Master |

Changes:

Version 1.0.2 (11.2008)

- Menu bar an function "History" added

Version 1.0.3 (11.2008)

- COM Tester added

Version 1.0.4 (11.2008)

- Recent Menu added

Version 1.0.5 (12.2008)

- Bug (History") fixed
- Dongle Days in Menu title added
- Extension „*.OLD und *.PJT“ added

Version 1.0.6 (1.2009)

- www.tycofire.hpage.com (English) added

Version 2.0.0 (4.2009)

- Patches for MZX Consys Versions (V16.0 and higher).
- Added point overview in menu „Function“.
- New option „Find Consys“added (via Drag and Drop you can choose Consys versions).

Version 3.0.0 (9.2009)

Menu "Settings" modified.

Auto MX / ZX / MZX Consys search.

- 4 additional "green" function buttons installed.
- Button for "MZX Device II Version 1.0.0" installed fix

Version 3.0.1 (11.2009)

- The Menu "Function" with "splits MZX Data Logger CSV File" and List separator "," / ";" extended.
- MX Device Version 2.0.1 with Spanish translation
- MZX Printer Version 3.0.1 with Spanish translation

Version 3.0.2 (2.2010)

- Menu "Options"with the Function „Re-Installation“completed
- MZX Printer Version 3.0.2 with the output of the open file

Version 3.0.3 (3.2010)

- In the main window from the project file, just the Consys version and the revision can be read.
- MZX Printer Version 3.0.3 added „POINT TESTED“in the menu.
- MZX Printer Version 3.0.4 opens with a screen resolution 800/1024x600 always full window (especially for netbook's).
- MZX Printer Version 3.0.5 added „EXCEL“in the menu.
- MZX Printer Version 3.0.6 in the menu "Settings", select "Printer Loop500 inserted.
This can be simulated using the XON / XOFF protocol "Report Printer" for Loop500.

Version 4.0.0 (01.2011)

- Setup Installation for Win7 created
- Support function added for additional functions.

We do not accept liability for any damages that may occur as a result of using this software.